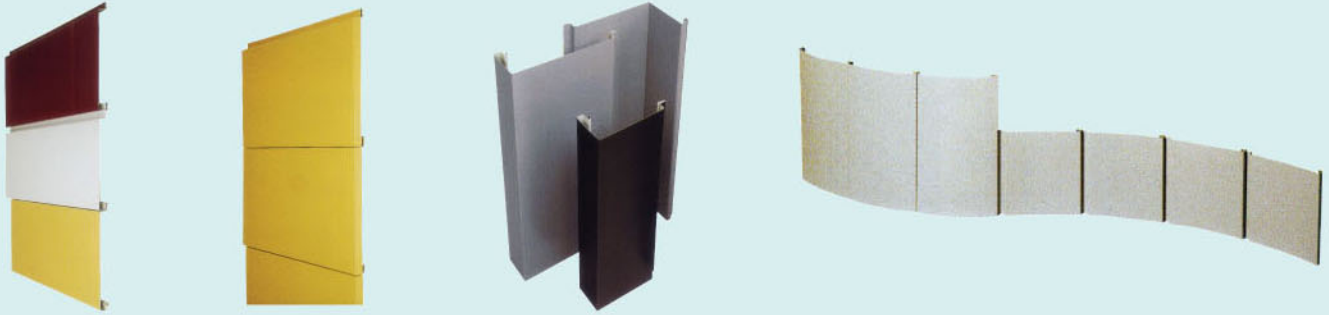


F SERIES EXTERIOR CLADDING

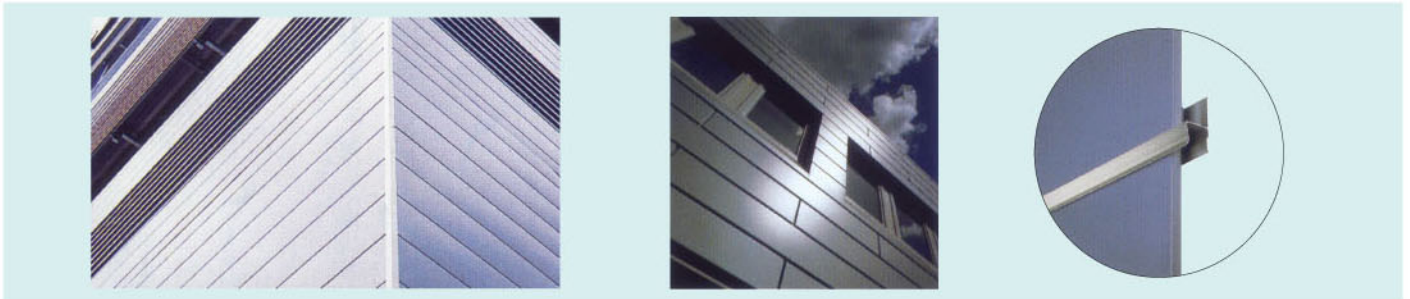


DIMENSIONS & WEIGHTS

unit:mm

Panel	Width	Thickness	Min. Length	Max. Length	Weight panels & carrier/m ² *
300F	300	0.8	1000	6000	3.7kg
400F	400	0.8	1000	6000	4.1kg
500F	500	1.0	1000	6000	4.5kg
600F	600	1.2	1000	6000	4.9kg

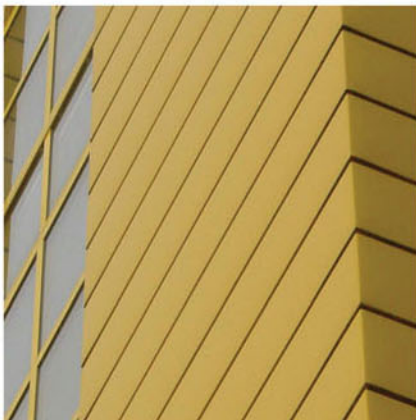
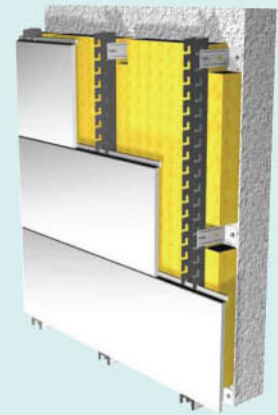
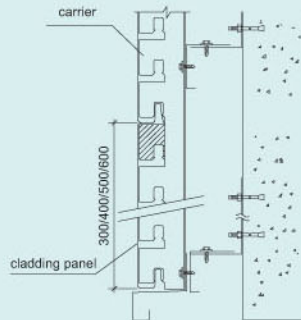
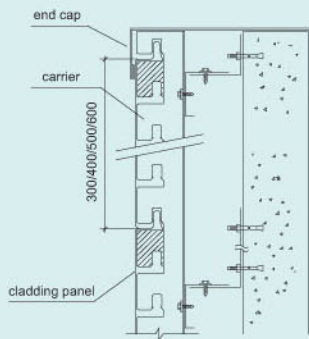
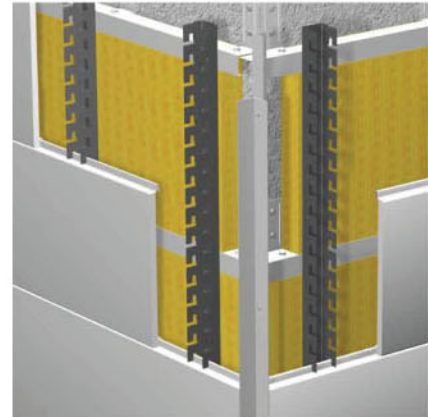
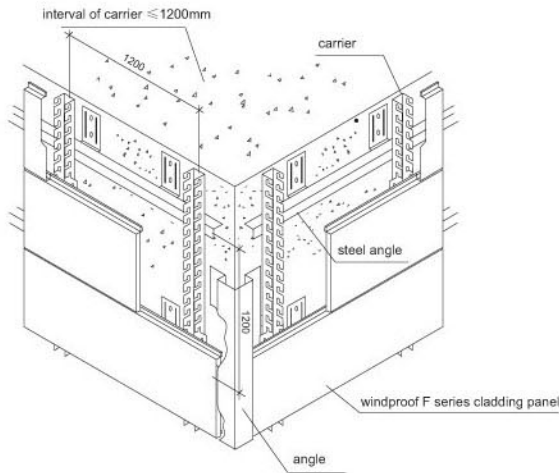
* Based on panels installed on 3 or more carriers with a windload (pressure) of 1500 N/m²
Panels from 250-1000 mm and >6000mm are available on request.



PANEL SPANS

Panel span (m)	Cladding panels Wind pressure/suction $f = \frac{L}{200}$						Panel span (m)	Soffit panels on soffit rail Wind pressure/suction $f = \frac{L}{250}$					
	Single		Double		Multiple			Single		Double		Multiple	
	Module (N/m ²)	Module (N/m ²)	Module (N/m ²)	Module (N/m ²)	Module (N/m ²)	Module (N/m ²)		Module (N/m ²)	Module (N/m ²)	Module (N/m ²)	Module (N/m ²)	Module (N/m ²)	Module (N/m ²)
0.50	3000	3000	3000	3000	3000	3000	0.50	3000	3000	2667	2000	3000	2273
0.75	2667	2000	2667	2000	3000	2273	0.75	3000	3000	1778	1333	2020	1515
1.00	2000	1500	2000	1500	2273	1705	1.00	2717	2500	1333	1000	1515	1136
1.25	1600	1200	1600	1200	1818	1364	1.25	1391	1429	1067	800	1212	909
1.50	1006	1000	1333	1000	1515	1136	1.50	805	827	889	667	1010	758
1.75	634	651	981	856	1219	974	1.75	507	521	762	571	866	649
2.00	425	436	751	655	817	819	2.00	340	349	667	500	653	568
2.25	298	306	593	518	574	589	2.25	239	245	573	444	459	471
2.50	217	223	481	419	418	429	2.50	174	179	418	400	334	343

HORIZONTAL INSTALLATION FOR F SERIES EXTERIOR CLADDING



JOINTS

Apart from the flush joint system ("T" joint) the DEXONE Multiple Cladding System also offers a more expressive 25 mm recessed version ("U" joint).

The system is suitable for vertical as well as horizontal panel layouts.

Panels may be connected by use of splices, a "chair profile" or a double top hat joint.

A cost effective "Cassette-look" can be created simply by combining the "T" joint or the 25 mm recessed "U" joint with factory made panel-end closures.